

PART OF S.W. 1/4 OF
SECTION 8, T.6N., R.1W., S.L.B.&M.

42-2

TAXING UNIT: 25

IN OGDEN CITY

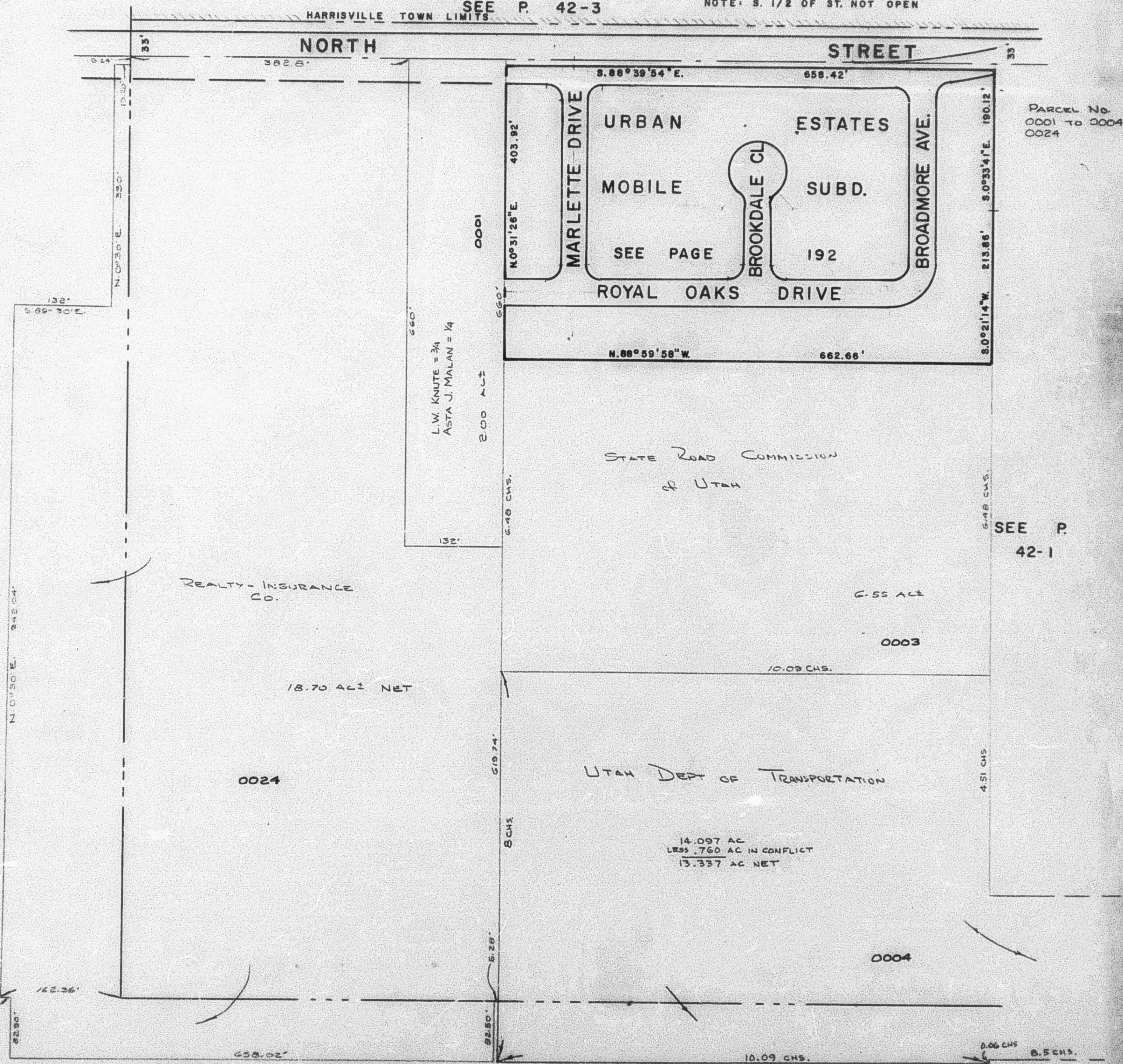
SCALE 1" = 100'

PREFIX: 11-042

ALSO SEE PAGE 42-3

HARRISVILLE TOWN LIMITS SEE P. 42-3

NOTE: S. 1/2 OF ST. NOT OPEN



PARCEL No.
0001 TO 0004
0024

L.W. KNUTE = 3/4
ASTA J. MALAN = 1/4

STATE ROAD COMMISSION
of UTAH

UTAH DEPT OF TRANSPORTATION

14.097 AC
LESS .760 AC IN CONFLICT
13.337 AC NET

SEE BOOK 12 PAGE 75-1

W.F.J. 10-70

SEE P.
25

SEE P.
42-1

11